

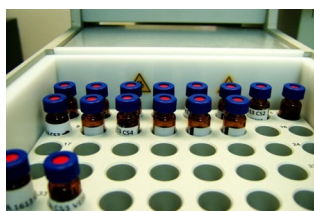


POLO DI SPECIALIZZAZIONE MICROINQUINANTI
DIPARTIMENTO PROVINCIALE DI TARANTO
Via Anfiteatro 8, 74100 Taranto
Tel +39 0997786806
Fax +39 0997786802
www.arpa.puglia.it
info@arpa.puglia.it

Misurazione delle deposizioni atmosferiche in ambiente rurale: utilizzo di campionatori deposimetrici ed interpretazione del dato ambientale e sanitario

Esposito V, Maffei A, Assennato G

ARPA PUGLIA



Teramo IZS A&M, 20-21 giugno 2012

6,7



The Taranto area (Southern Italy) hosts several industrial facilities including thermal/combustion processes with remarkably high raw materials and high energy demand and known potential sources of PCDD/Fs and PCBs release to air, land, and water. These facilities include a large integrated steel plant (1), a medium-sized oil refinery (2), a large cement-works (3), two power plants (4,5), and three waste incinerators (6,7,8) as well as a large naval base with military shipyards (9).

Stazioni di campionamento delle deposizioni atmosferiche



Deposimetro bulk



Deposimetro bulk



Deposimetro bulk



Deposimetro bulk



Threshold values for atmospheric bulk depositions

	Monthly max <i>pg TE/mq die</i>	Yearly average max <i>pg TE/mq die</i>
Belgium 2010 (1)	21,6 (Total TEQ)	8,2 (Total TEQ)
Germany 1994 (2)	15 (I-TEQ)	5 (I-TEQ)
Germany 2004 (3)		4 (Total TEQ)

(1) Desmedt M., Roekens E., De Fré., Cornelis C., Van Holderbeke M., 2008. Organohalogen Compounds 70, 1232-1235.

(2) LAI - Bericht des Länderausschusses für Immissionsschutz (LAI). 1994.

(3) LAI - Bericht des Länderausschusses für Immissionsschutz (LAI). 2004. Vom 21.

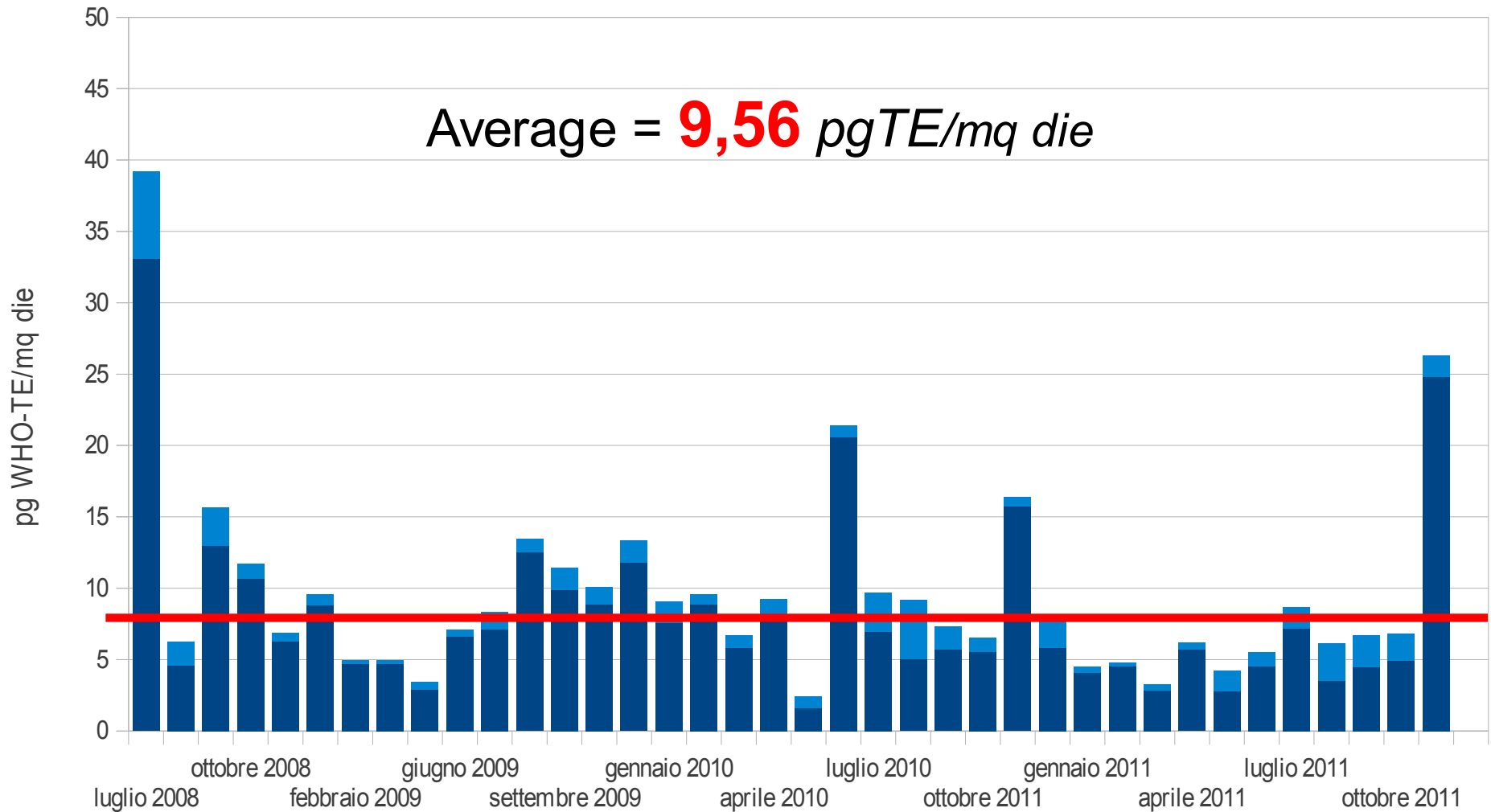
Monthly atmospheric deposition rates Year 2008-2011

	MIN	MAX	AVERAGE
TAMBURI (urban industrial)	5,7	48,3	17,27
TAMBURI (Urban industrial SCHOOL!) Only 2 samples, 2012	12,4	19,5	
FORNARO FARM (Rural)	2,4	39,17	9,56
BORGO (urban, no traffic)	1,71	22,14	5,66
TALSANO (urban background, SCHOOL!)	1,05	47,03	6,7

Rural

Masseria del Carmine TA

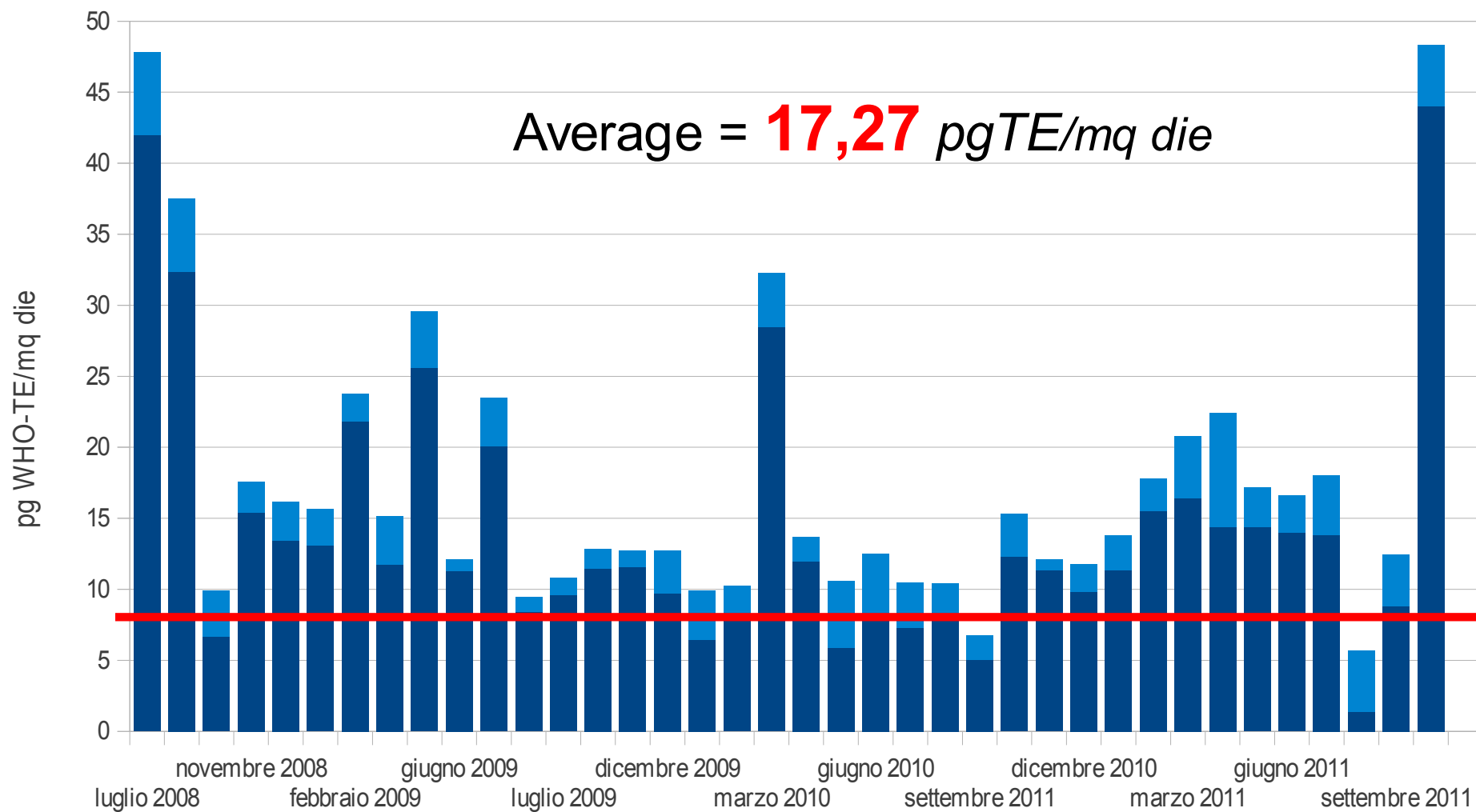
■ Deposizione di PCDD/F (WHO-TE) ■ Deposizione di PCB diossina-simili (WHO-TE)



Industrial

Chiesa S. Francesco, Q.re Tamburi TA

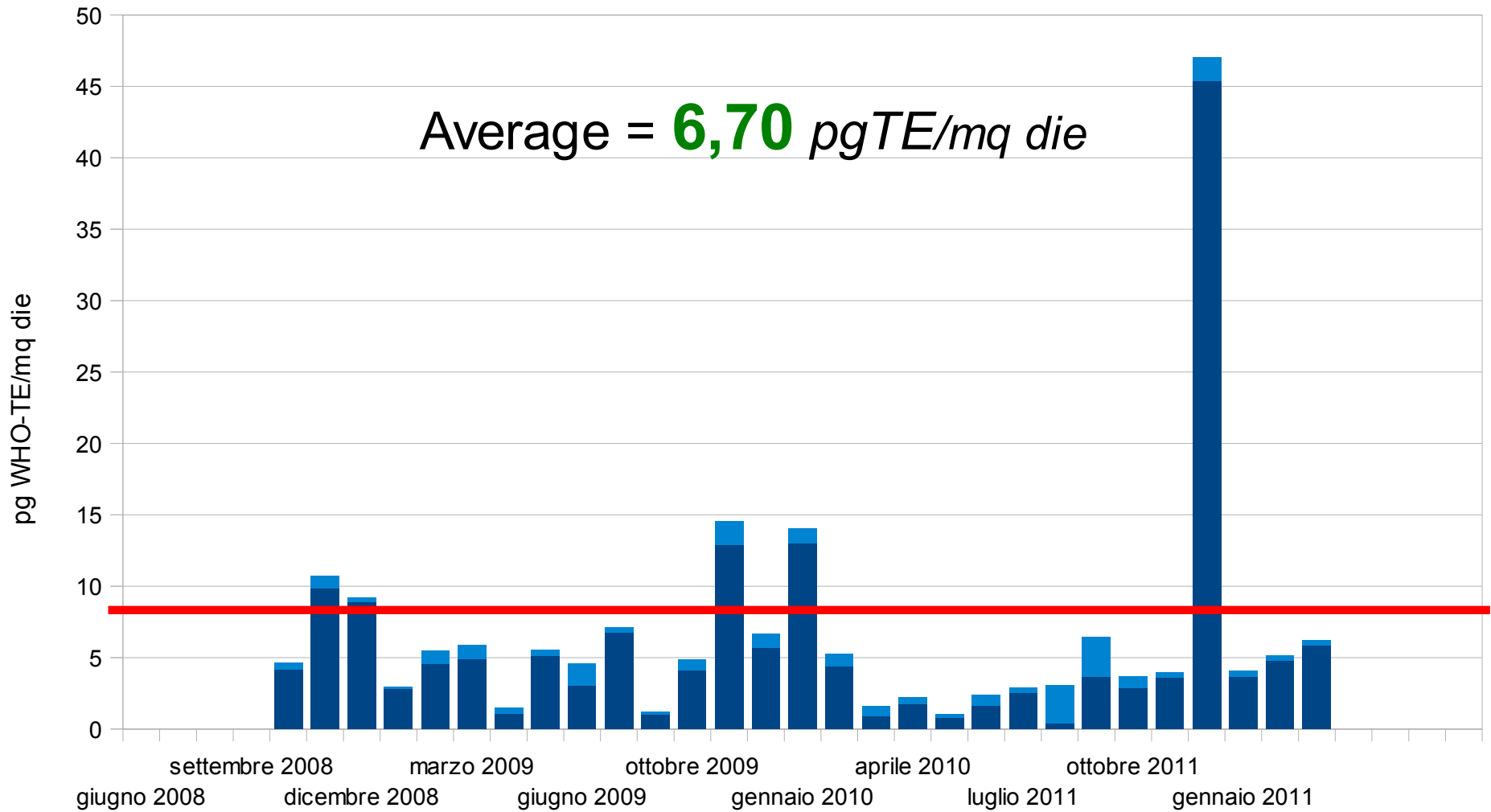
■ Deposizione di PCDD/F (WHO-TE) ■ Deposizione di PCB diossina-simili (WHO-TE)



Urban background (SCHOOL)

Via Brunelleschi, Talsano TA

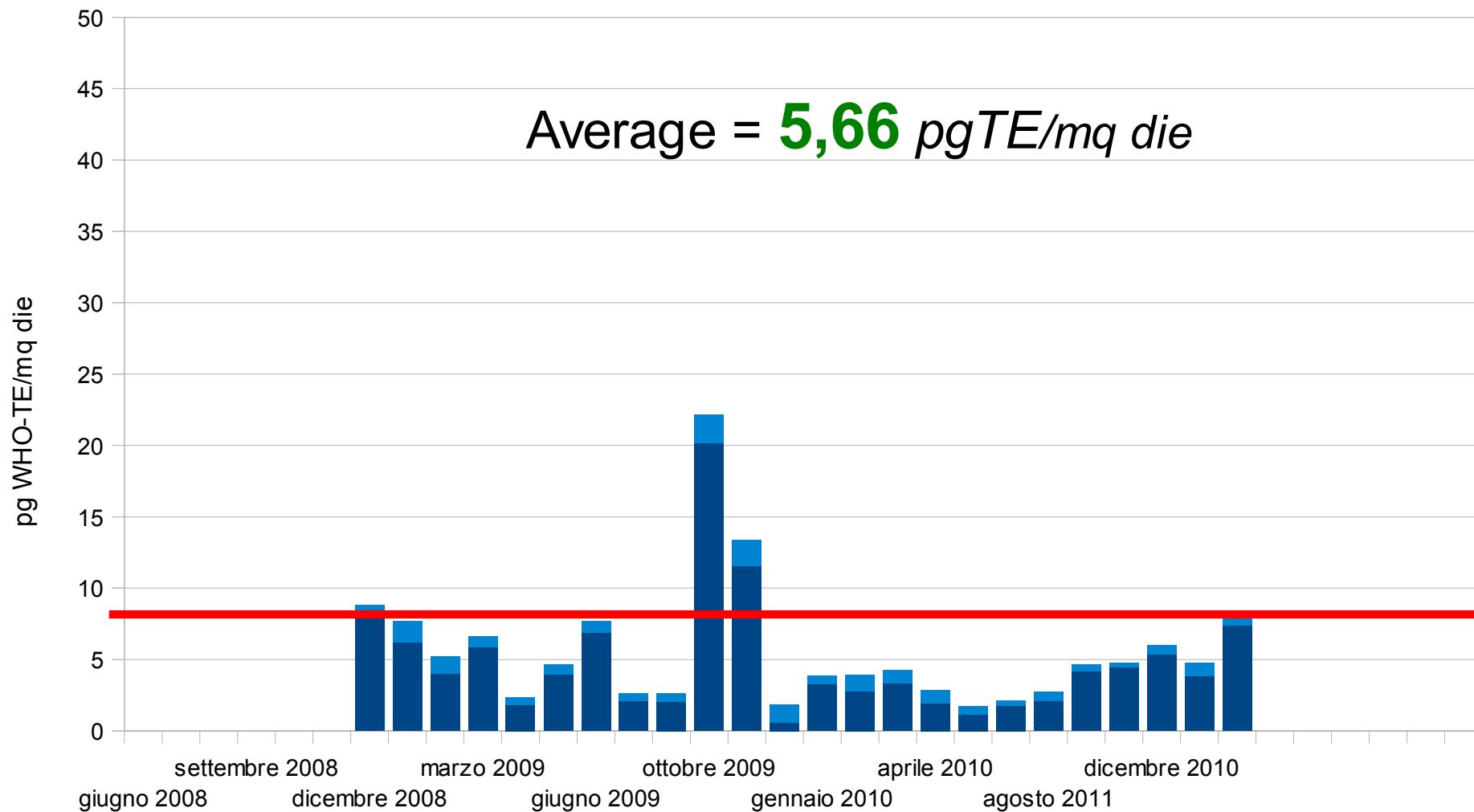
■ Deposizione di PCDD/F (WHO-TE) ■ Deposizione di PCB diossina-simili (WHO-TE)



Urban (no traffic, height 60 m above road level)

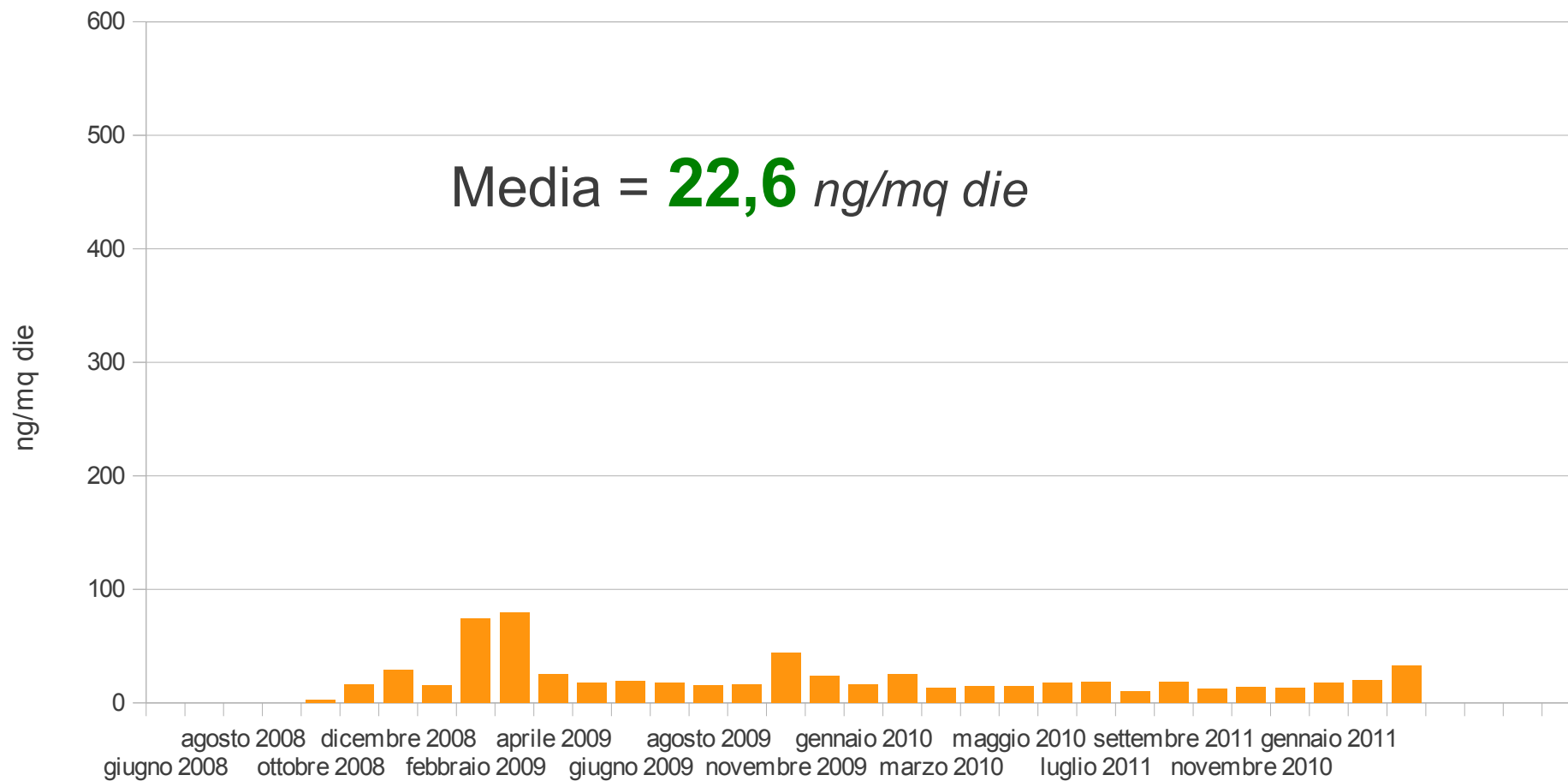
Via Anfiteatro, Palazzo del Governo, TA

■ Deposizione di PCDD/F (WHO-TE) ■ Deposizione di PCB diossina-simili (WHO-TE)



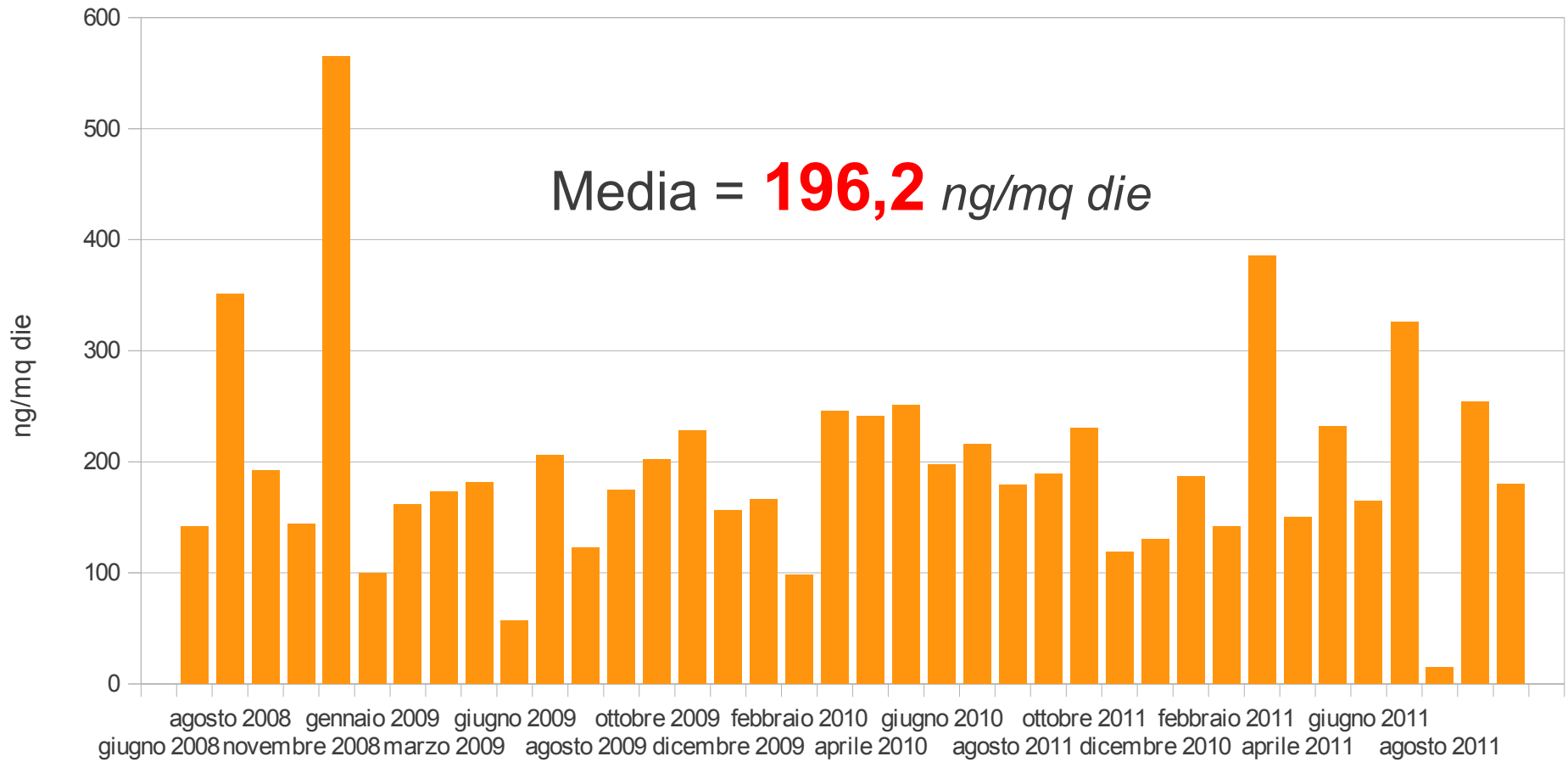
Via Brunelleschi, Talsano TA

■ Deposizione Benzo(a)pirene



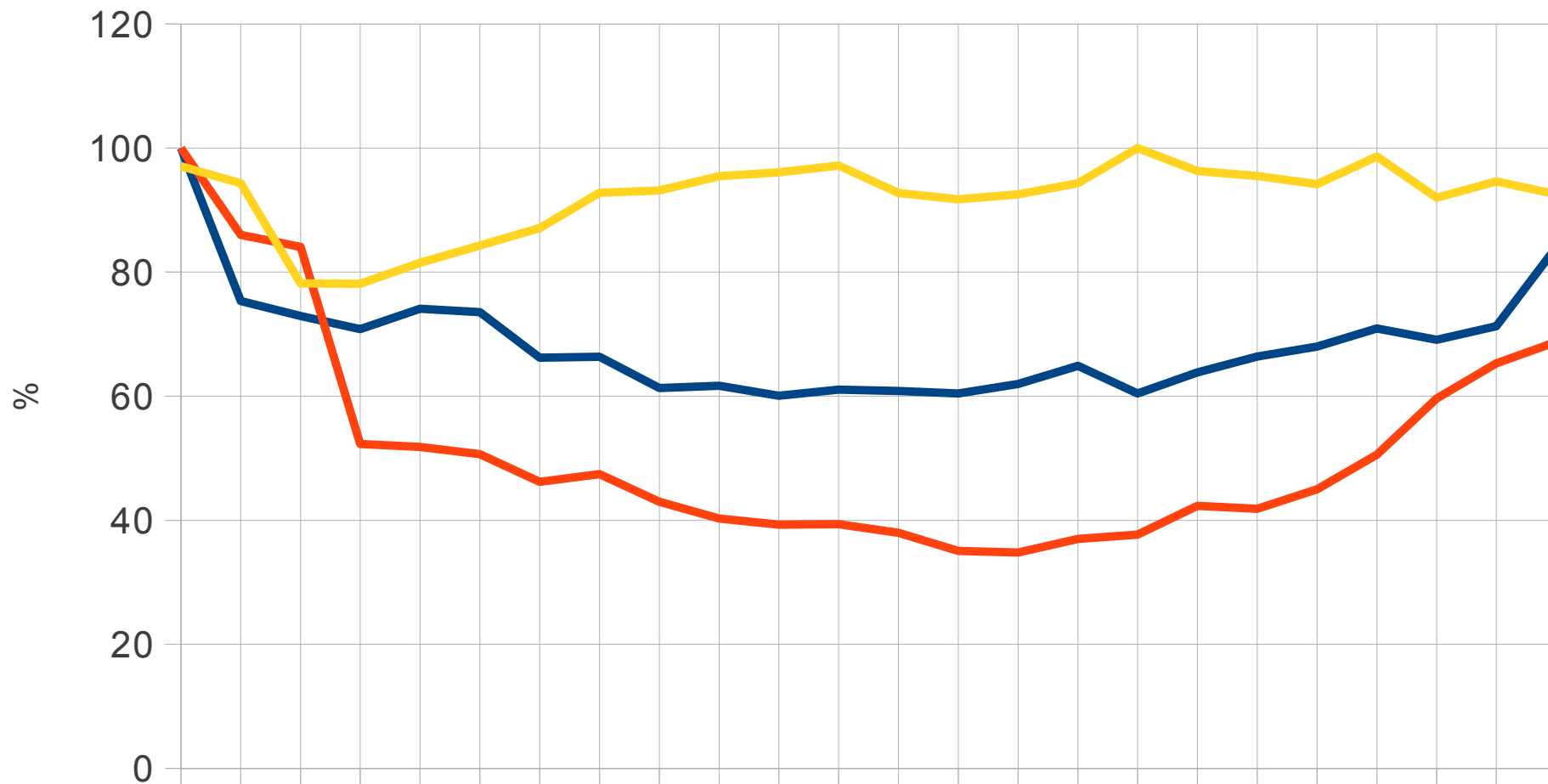
Chiesa S. Francesco, Q.re Tamburi, TA

■ Deposizione Benzo(a)pirene



TAMBURI, Via Orsini (industriale)

Trend % deposizioni

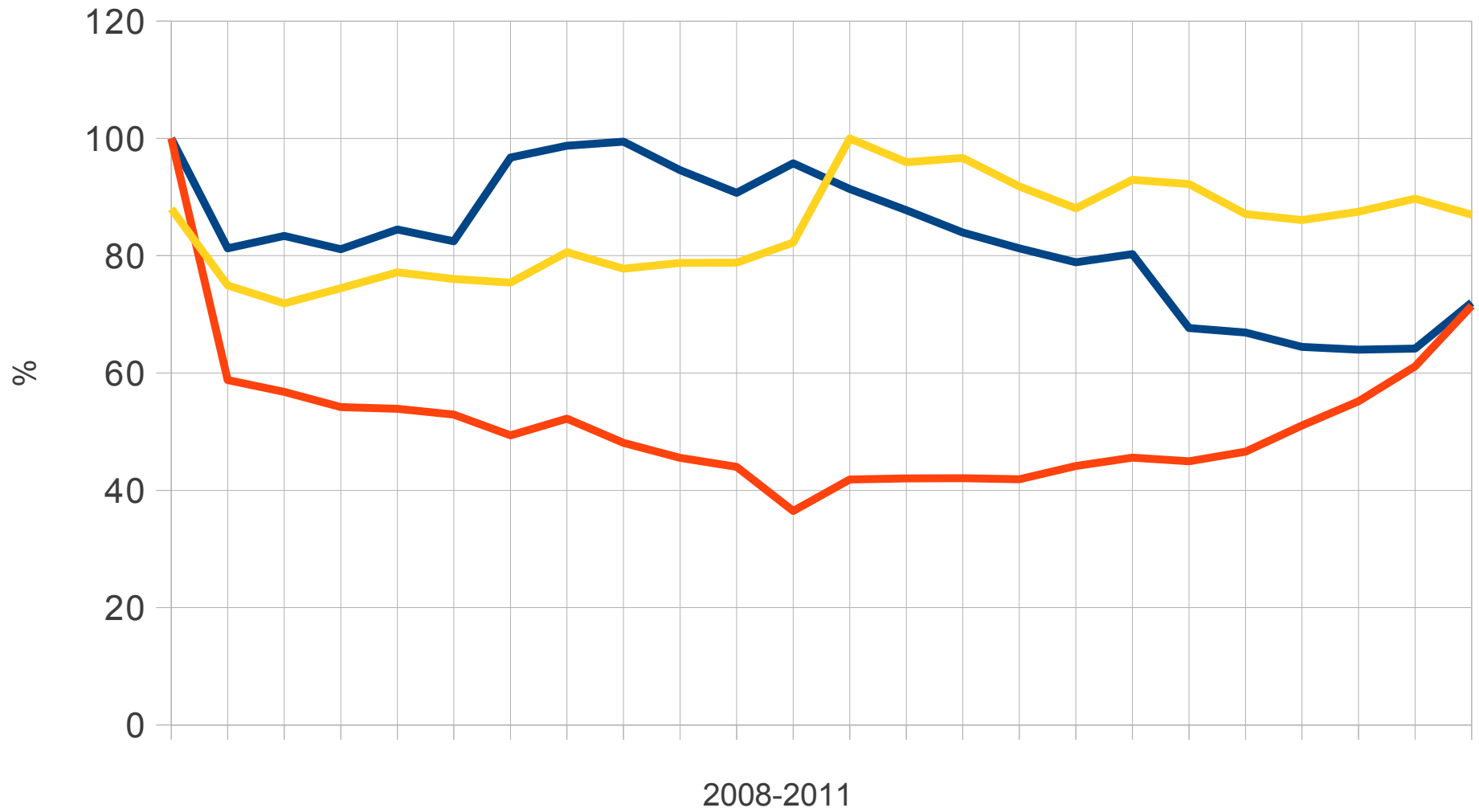


2008-2011

TEQ PCB tot BaP

MASSERIA del CARMINE (rurale)

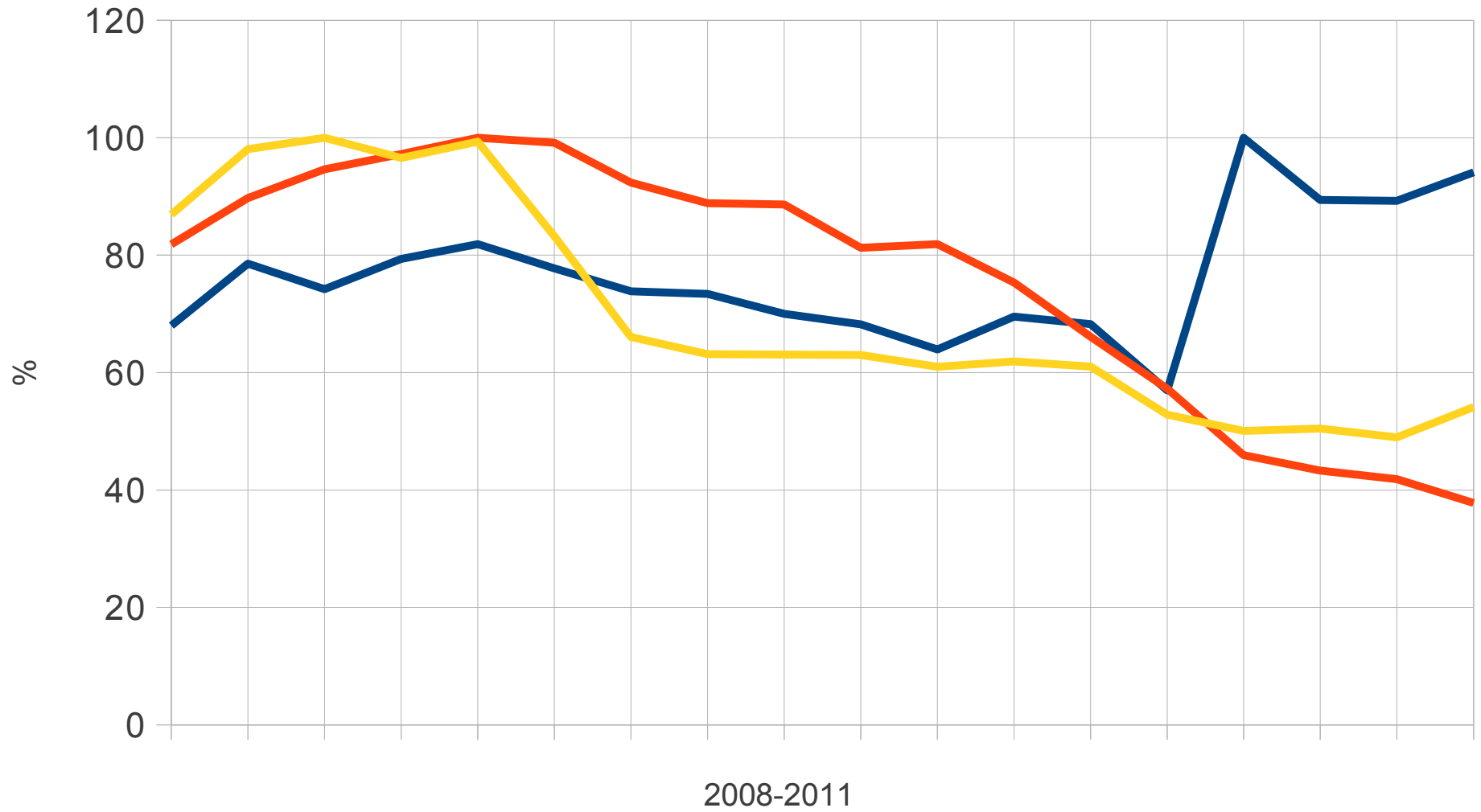
Trend % deposizioni



— TEQ — PCB tot — BaP

TALSANO (fondo urbano)

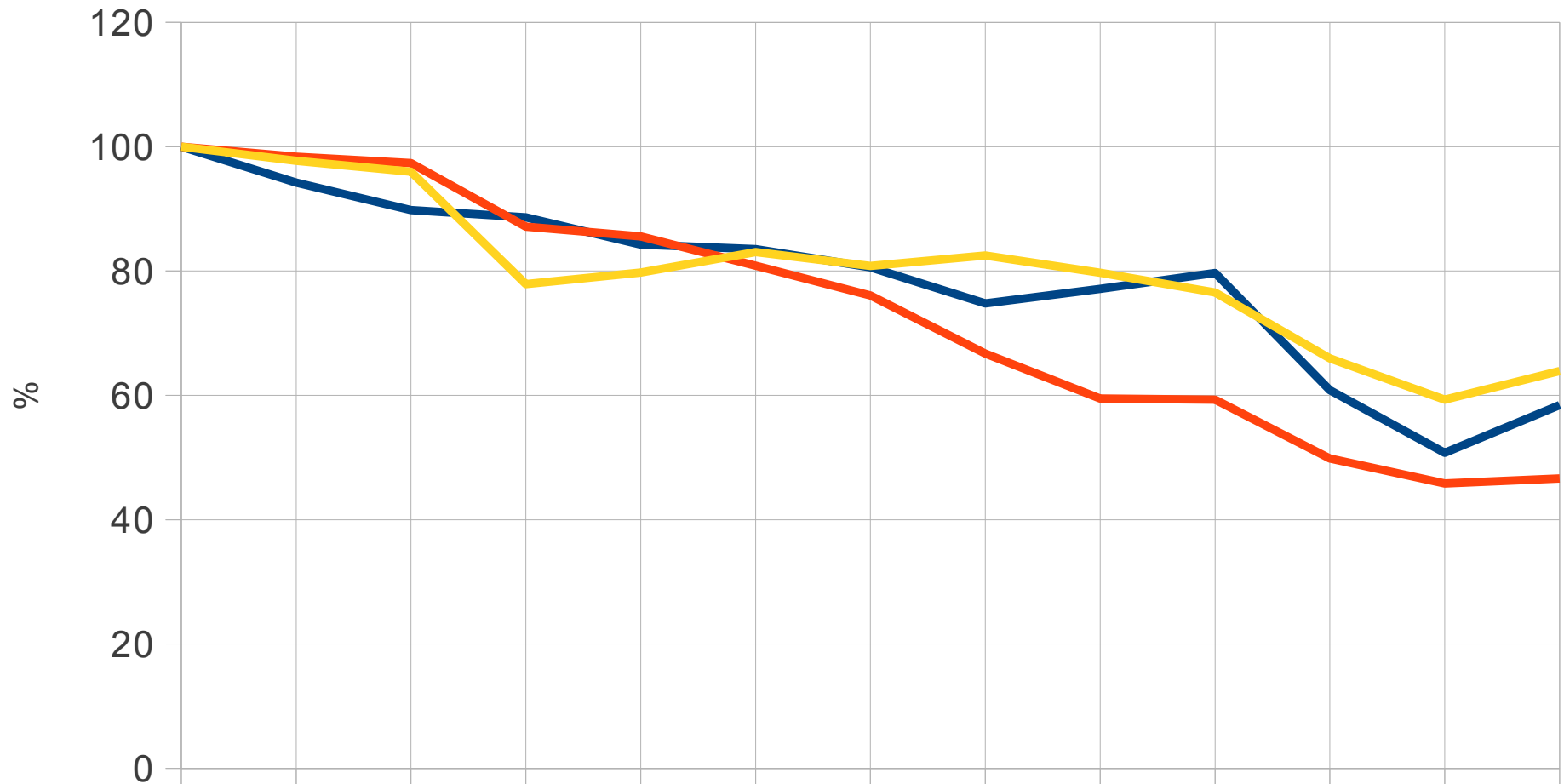
Trend % deposizioni



— TEQ — PCB tot — BaP

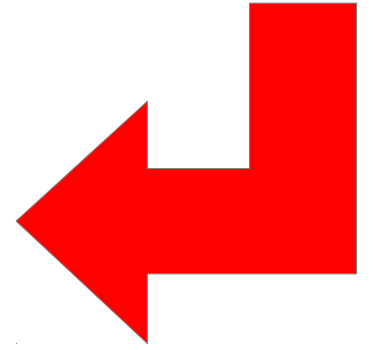
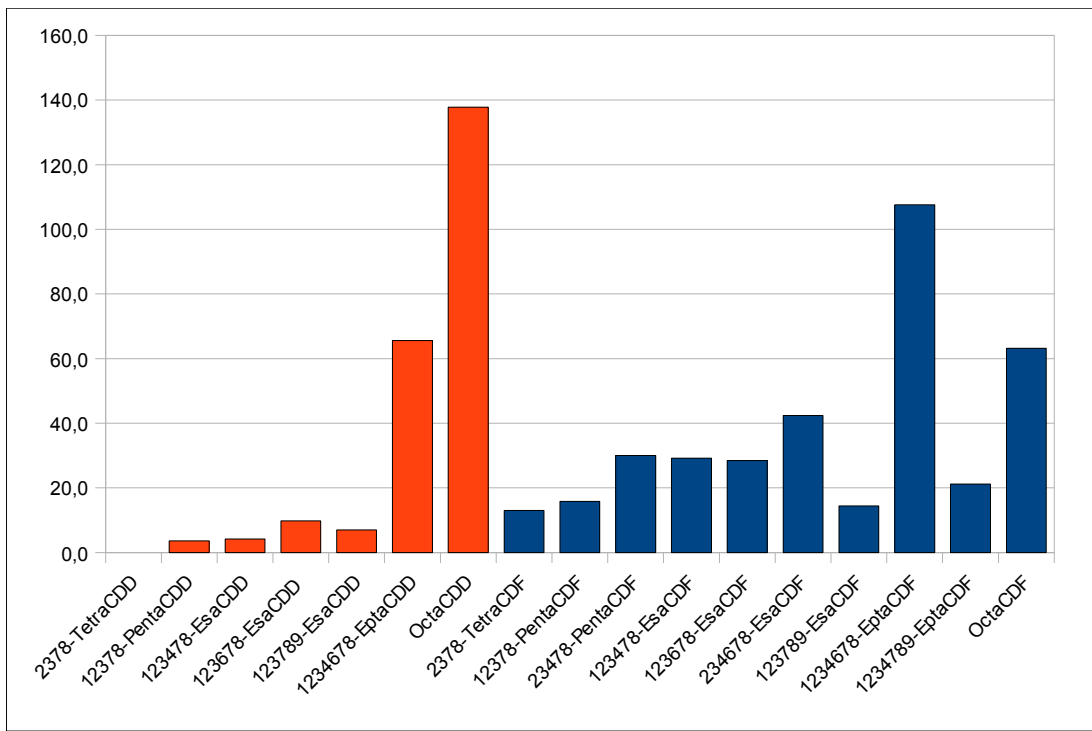
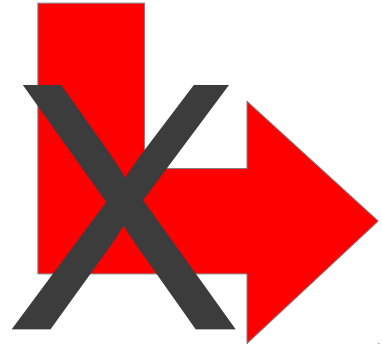
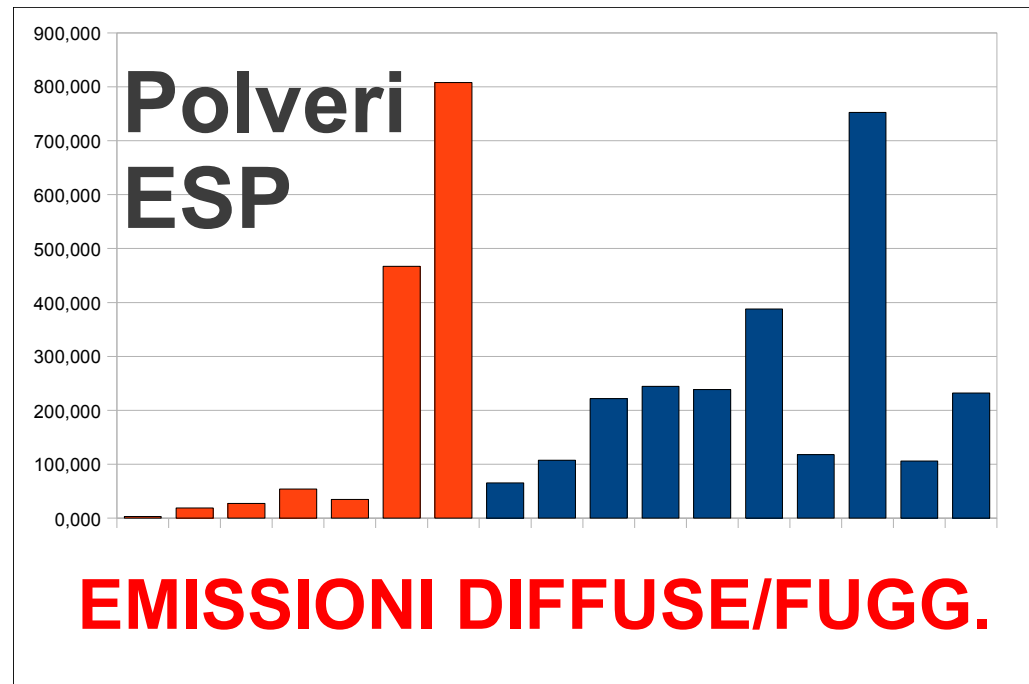
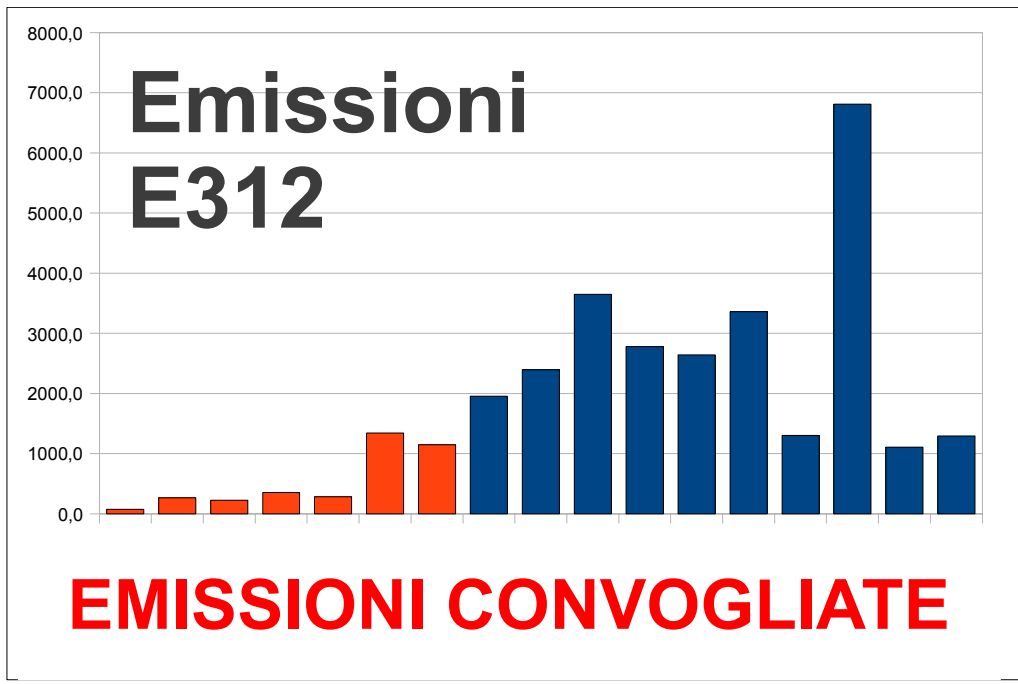
BORGO (Palazzo del Governo, H=60m)

Trend % deposizioni



2008-2011

— TEQ — PCB tot — BaP



**Depo Tamburi
Luglio 2008**



ARPA PUGLIA
U.O. MICROINQUINANTI ORGANICI
DIPARTIMENTO PROVINCIALE DI TARANTO
Via Anfiteatro 8, 74100 TARANTO
Tel: +39 099 7786806
Fax: +39 099 7786802
www.arpa.puglia.it
dap.ta@arpa.puglia.it

“MERCURY BULK”

Specifiche tecniche

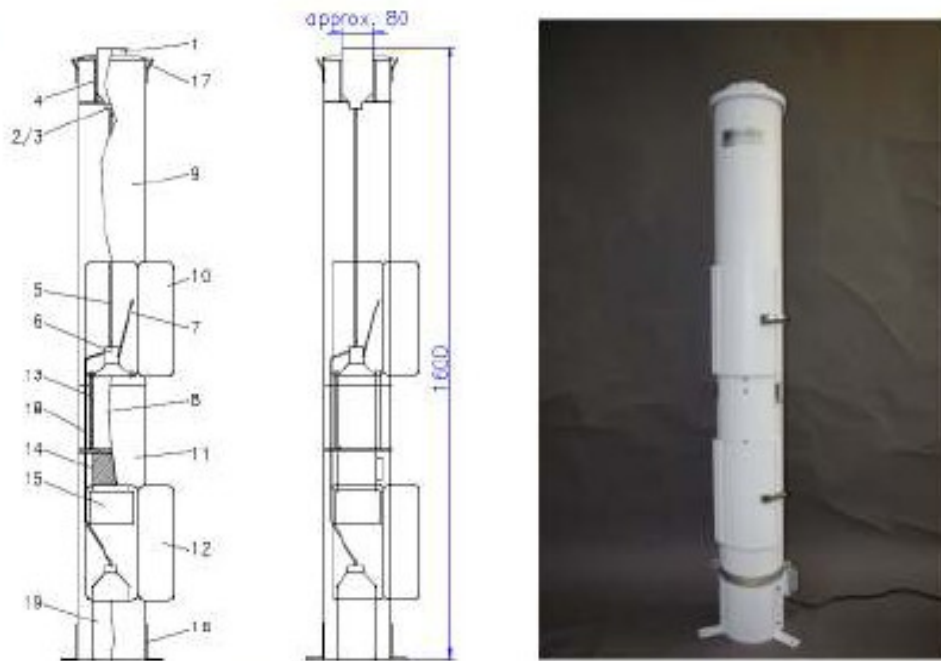
Accessori Opzionali

Lettore di Temperatura per Camera a T controllata o per struttura principale

Downgrade: No riscaldamento imbuto

Bottiglia ed imbuto di raccolta aggiuntiva e relativi connettori

Sistema di Overflow con bottiglia in HDPE e relativo connettore (altri materiali su richiesta)



List of components

1	Collection funnel	11	Bottom section collector housing
2	Funnel connector	12	Door bottom section
3	Filter	13	Cooling – heating unit for bottle
4	Funnel heating	14	Cooling element for Peltier unit
5	Main capillary	15	Electronic
6	Bottle head	16	Metal angle piece – ground mounting
7	Air venting capillary	17	Wire eyes
8	Collection bottle	18	Overflow capillary (optional)
9	Top section collector housing	19	Overflow bottle (optional)
10	Door top section		

Altre sperimentazioni in corso....

Discarica RSU di Autigno (Brindisi).



Sig. Luca Gigante



**Dott.ssa Nichi
Varvaglione**



Dott.ssa Anna Maffei



Sig. Donato Bruno